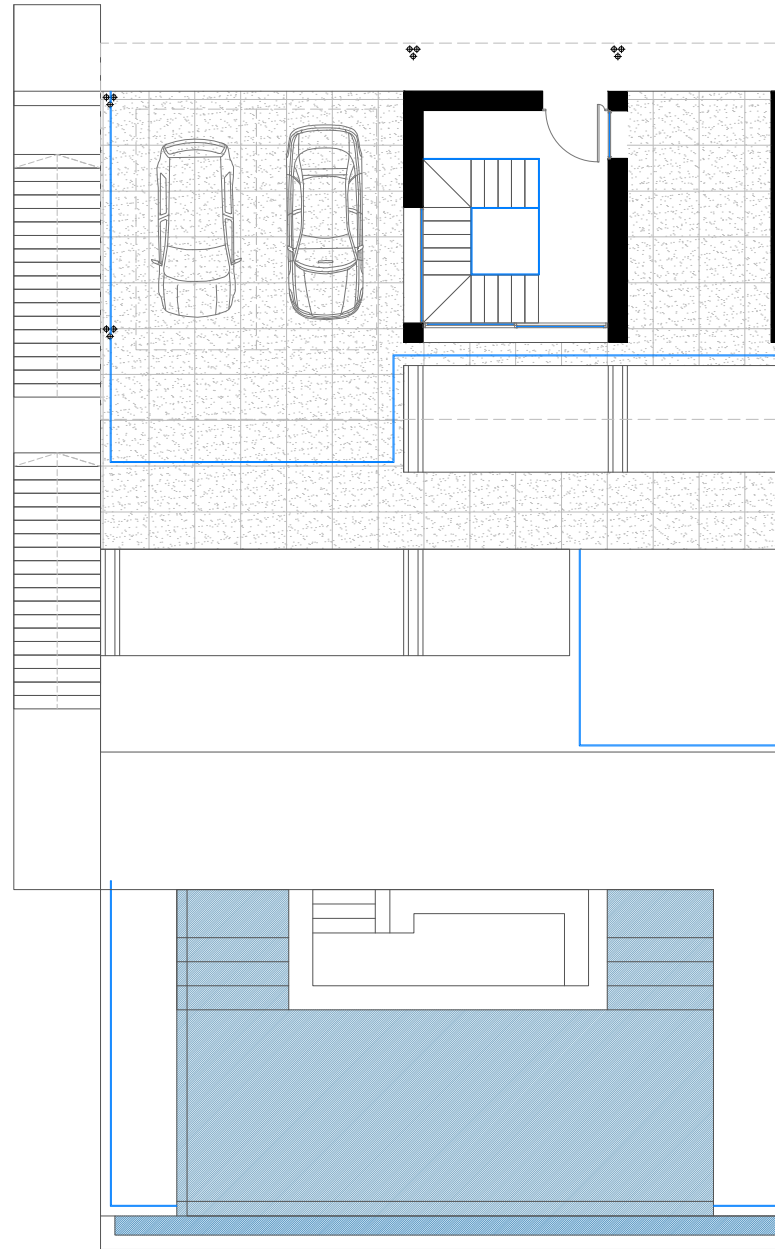
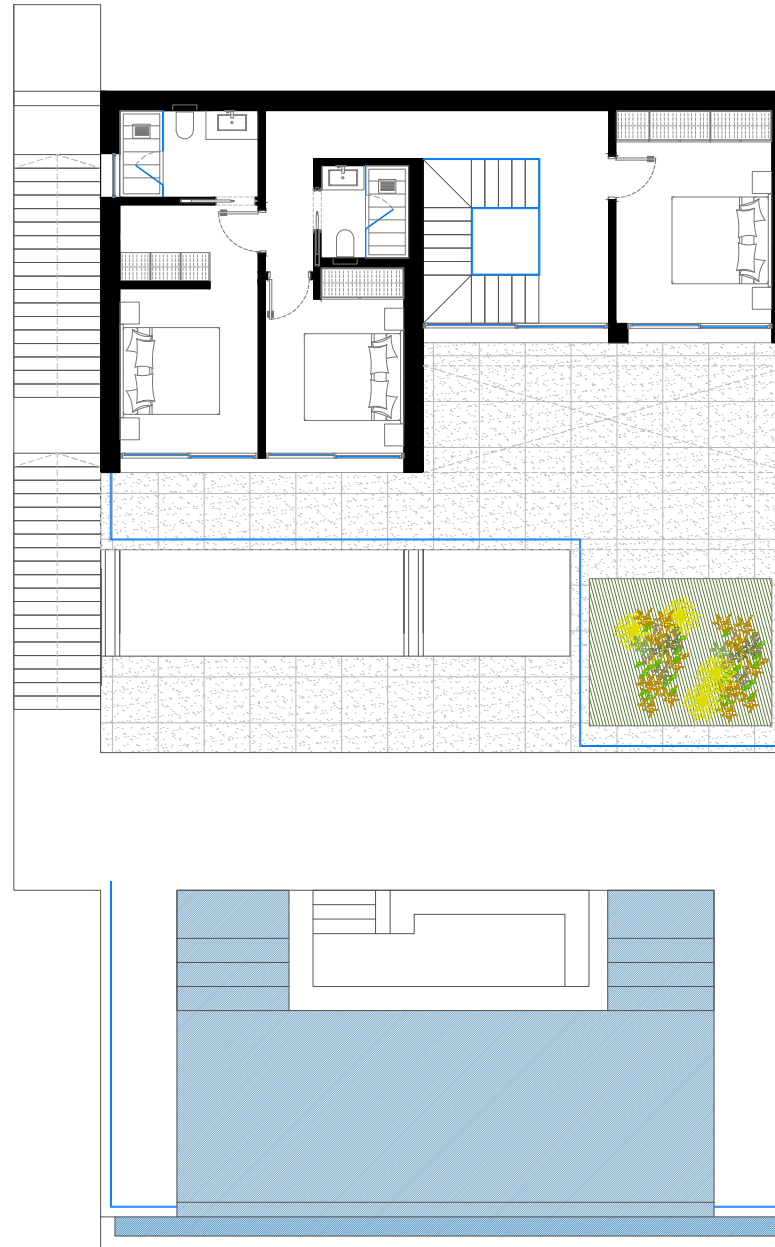


◆ ACCESS FLOOR



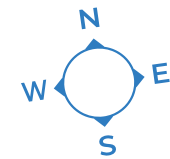
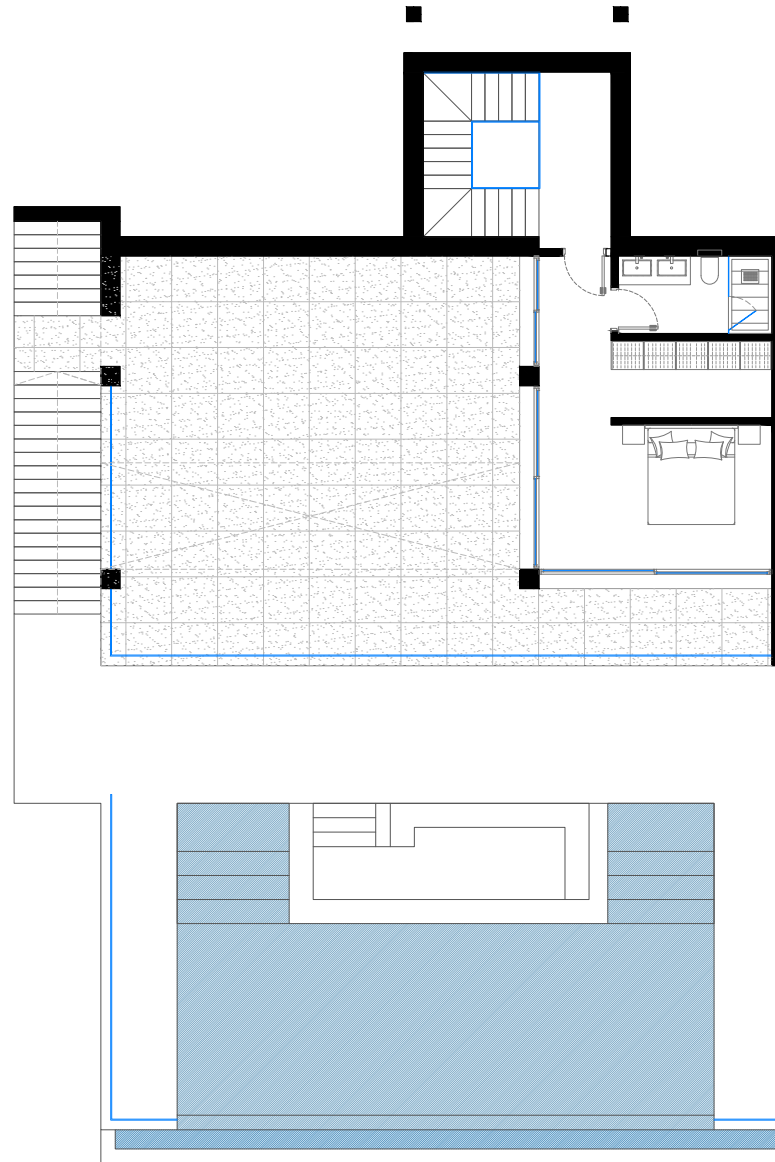
Built Area: 24,27 m²
Covered Terraces: 71,92 m²
Uncovered Terraces: 5,12 m²
*Includes Covered Carport

◆ SECOND FLOOR



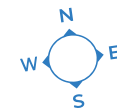
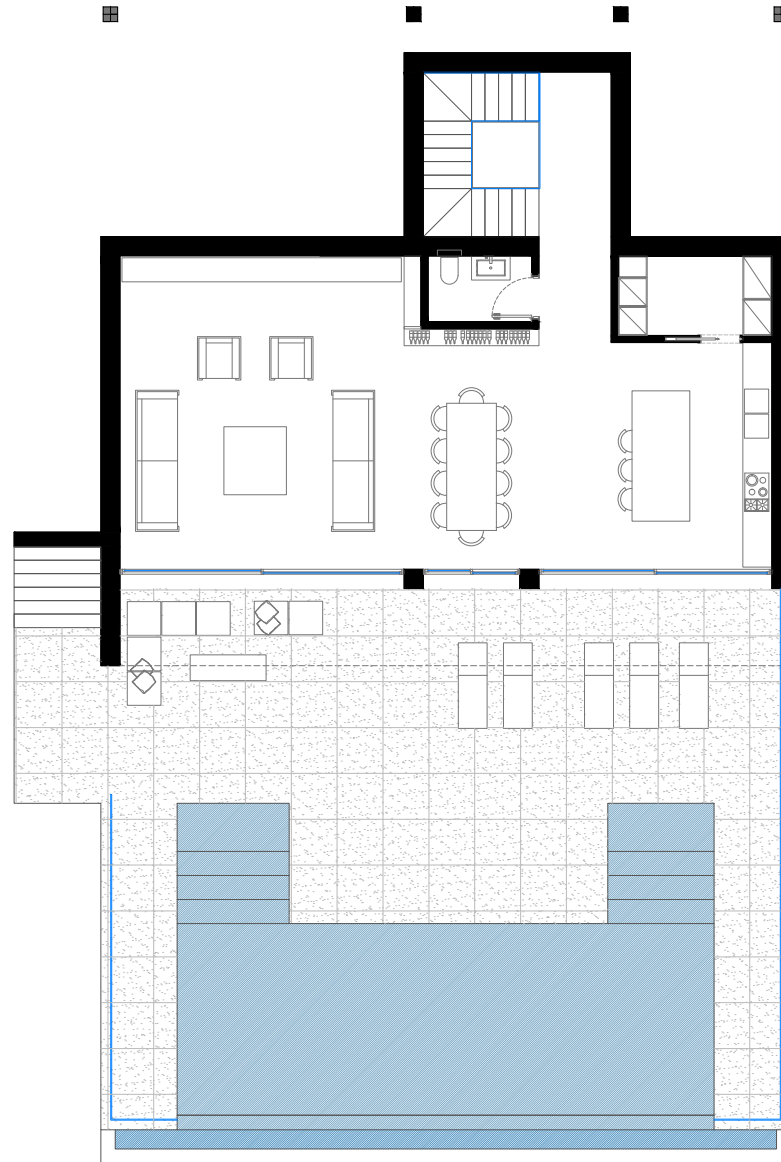
Built Area: 92,89 m²
Covered Terraces: 22,73 m²
Uncovered Terraces: 18,77 m²

◆ FIRST FLOOR



Built Area: 60,10 m²
Covered Terraces: 57,89 m²
Uncovered Terraces: 18,77 m²

◆ GROUND FLOOR



Built Area: 122,74 m²
Covered Terraces: 21,95 m²
Uncovered Terraces: 81,44 m²
Pool: 55 m²